
















COMPOSITIONS

GRADE 4

1) Write your own wall rhythm:

It must be 8 measures long. A measure is 4 beats long.
The time signature should be 4/4.

You may use the following types of notes and rests in your wall rhythm:

 = 1/2 beat	 = 1/2 beat	 = 1/2 beat	
 = 1 beat	 = 1 beat	 = 1 beat	 = 1 beat
 = 2 beats	 = 2 beats	 = 2 beats	 = 2 beats
 = 2 beats	 = 2 beats	 = 4 beats	 = 4 beats

Be sure each measure has NO more and NO less than 4 beats.

4
4

2) Once you have finished your wall rhythm...you should have 32 beats total. (8 measures x 4 beats each=32 beats)...

Write the melody ---select a pitch for each note head

You may use the following pitches: G A B C D

example of wall rhythm with melody:

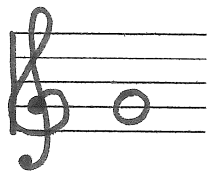
4/4

																					
G		G G A B B			C	D	C	D	C	B	A		G		B			D		D	



3) Once you have finished with the melody and rhythm...you are ready to notate your composition on the staff.

To help you with this...here are the notes G A B C and D on the staff:



G



A



B

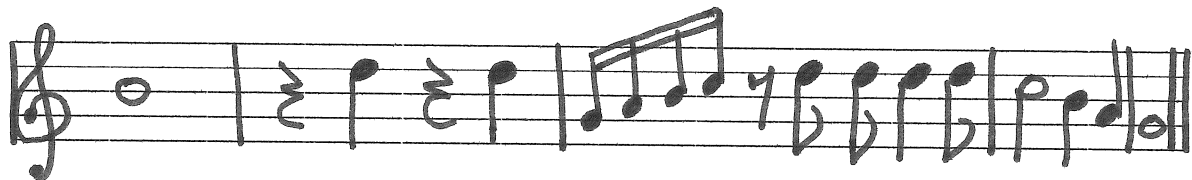


C



D

here is my example written on the staff:



Now, write your composition on the staff:

